



Altwood Church of England School

ABOUT OUR SCHOOL

Altwood Church of England School is a small mixed 11 – 18 comprehensive school based in Maidenhead. We serve a vibrant community where every student is treated and valued as an individual. We set high standards and expectations and we encourage and support our students to achieve their very best. The school is situated in pleasant grounds with many of the curriculum and other spaces having undergone recent refurbishment. Altwood Church of England School converted to an Academy in 2012.

OUR VALUES

As a Church school we:
Welcome all, value all, respect all;
Celebrate the fact that everyone has God-given gifts and talents and embrace the responsibility we have for enabling students to make the most of these gifts and talents so that they can go on to achieve highly;
Have excellence as our goal;
Provide extensive opportunity for spiritual development and personal support;

Value our rich and diverse school community because it is made up of young people who are of the Christian faith, other world faiths and of no particular faith; all have a significant part to play in our society.

OFSTED GOOD (2017)

'(The school) provides extensive opportunity for spiritual development and personal support;'

'The effectiveness of the leaders' approach to improving the quality of teaching was evident during this inspection.'

'Pupils are very keen to learn and are eager to do well'

'Pupils' behaviour is good. Positive relationships between pupils and with adults permeate the school'



OUR COMMUNITY

Leadership is a very important part of life at Altwood. The House system provides the basis for extensive leadership opportunities and every student is encouraged to play an active part in one way or another.

Altwood Parliament ensures that students have the opportunity to fully engage in decision making at our school and the (PiXL) Edge programme credits all of our students, encouraging them to develop their leadership, organisation, resilience, initiative and communication. These key life skills support our academic curriculum so that our students can play a positive role in the school and wider community.

TEACHING AND LEARNING

Teaching and learning is at the heart of our drive for continuous school improvement. Based around our non-negotiables and our teaching and learning cycle staff and students are clear about expectations and set high standards to ensure progress is made in all lessons.

At Altwood, we take staff development seriously, as it is fundamental in providing the students with the best possible education and the most equitable class room experience. New staff are given a bespoke induction programme so that they quickly know the Altwood approach. All teachers participate in regular professional development through tailored INSET and staff learning programmes.

Students speak highly of their experience of teaching and learning at Altwood, their attitude to learning is positive. They are encouraged to 'Think Hard' and challenge themselves in order to make the best possible progress. Precise feedback is also crucial to ensure that teachers guide students to identify the gaps in their knowledge and boost their learning.

What our students' say:

89% say that teaching and learning is good or better and that they know what they need to do to improve their work.

'I like to have a checklist of what I have achieved and what I need to do to make the most progress.'

Over 80% of students in Year 11 and the Sixth Form believe that they have made good progress

'Teachers give lots of their time to help me improve.'

'I enjoy lessons where there are lots of different activities which keep me focussed and make learning fun.'



The recently refurbished science suite of rooms allow for specialist teaching to take place. Labs are well equipped and we are fortunate to have a comprehensive range of practical equipment available so that students can investigate the world around them through a series of practical experiences in each year group. Experimental work is actively encouraged where possible so students develop their investigative skills in addition to their key subject knowledge.

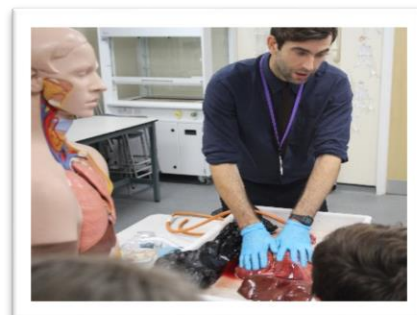
THE SCIENCE DEPARTMENT

In Science we encourage students to develop their analytical and evaluative skills as well as their understanding of the key scientific phenomena that can explain the world around them. We endeavour to both support those students that require additional guidance as well as extend the most able and encourage them to pursue the sciences at A-Level.

We offer all three sciences at A-Level and have seen an increase in numbers studying post 16 Science in recent years. At GCSE we offer AQA Combined Science and the AQA Triple Science GCSE's to our most able students. There has been a significant improvement in results at GCSE in recent years and we continually look to build on this improvement in the future.

Extra-curricular opportunities are an important part of learning and we ensure students have access to these opportunities both inside and outside our school community.

Trips to events such as the Big Bang Fair, Whipsnade Zoo, Braywick Nature Reserve and the "RSC Chemistry at Work Day" have given students a context for their learning and illustrated the opportunities available to them if they pursue a career in the sciences. In school opportunities also play an important role and programmes such as the Bronze Stem Crest Award, RAF Roadshow and educational collaborations with organisations such as Pfizer have offered opportunities for students to enrich their learning.



Altwood Church of England School

Altwood Road, Maidenhead, Berkshire, SL6 4PU Tel: 01628 622236, Email: altwood@altwoodschoo.co.uk

